

Laser phosphor cinema projectors

Reduced total cost of ownership, superior image quality



Bringing laser benefits to all cinema screens

Are you looking for a future-proof and cost-effective way to upgrade your technology to laser illumination? Barco's wide range of laser phosphor cinema projectors is what you're looking for. Freeing you from all lamp-related hassles and costs, these projectors allow you to cut costs and simplify your operations. What's more, they provide superior image quality.



Reduced total cost of ownership

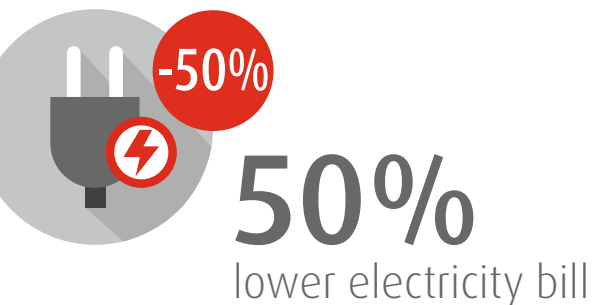
By eliminating all lamp-related material and labor costs and by reducing heat extraction requirements, the laser phosphor projectors allow you to cut costs significantly. Compared to lamp-based projectors, the optical efficiency is also significantly higher, resulting in savings of up to 50% on your electricity bill. Furthermore, light output can be dimmed to 30% of the initial brightness, enabling both 2D and 3D showings from one and the same projector. Combined with a long lifetime of 30,000 hours, the laser phosphor series provide a significantly reduced total cost of ownership.

Superior image quality

Varying in brightness levels – up to 24,500 lumens in 2K or 4K and providing high contrast levels, the laser phosphor family combines Barco's renowned **DCI-compliant image quality** with the outstanding **uniformity** that's unique to laser illumination. The laser phosphor projectors show improved image quality on both **white and silver screens** and are fully compatible with popular **3D systems**. Additionally, the projector's light output remains **constant** over time when used in an average cinema use case.

Unprecedented ease of mind

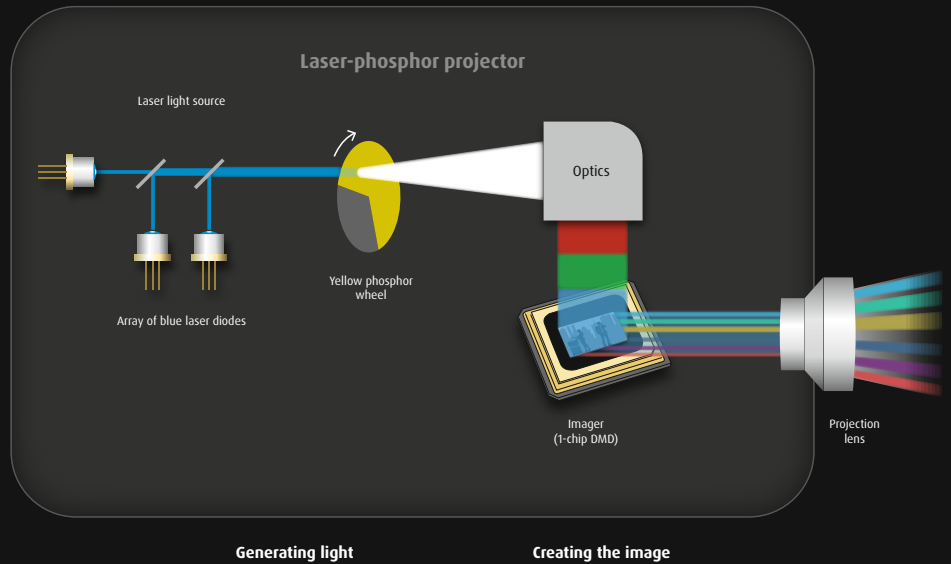
The laser phosphor projectors not only cut operating expenses, they also **reduce operational complexity**. Thanks to their laser phosphor light source, they **increase your uptime** and **free you from lamp-related costs, administration, and maintenance**. These projectors also allow you to optimize your labor cost. What's more, you don't need to invest in an entirely new projector model to benefit from laser phosphor technology. You can easily **retrofit** your current Barco lamp projectors with a laser phosphor module.



* in typical usage conditions

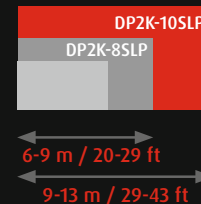
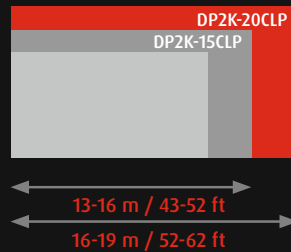
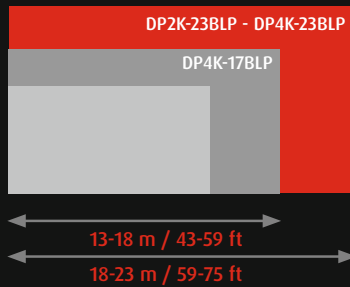
How does laser phosphor projection work?

Laser phosphor technology primarily uses blue laser diodes in combination with a phosphor component that generates red and green colors, whereas RGB laser technology uses separate red, green, and blue lasers. Barco chooses the right technology for the right application, determined by brightness, efficiency, and lifetime requirements.



Single-chip DLP engine for illustration purposes only

A perfect match for every screen



Recommended screen size calculations are based on 4.5 fL constant brightness in 3D over 30,000 hours, on the most common screen types and gains.

BLP series

2K & 4K high-brightness laser phosphor projectors

Designed for large to mid-size movie screens (13-23 m / 43-75 ft wide), the BLP laser phosphor projector series comprises 4K and 2K projectors that provide brightness levels up to 24,500 DCI lumens and high contrast for superior image quality.

The world's first 4K laser phosphor cinema projector, the DP4K-23BLP delivers consistent, razor-sharp, and high-contrast images with native 4K resolution and 24,500 lumens brightness.



At a glance

DP4K-23BLP

- Native 4K resolution
- 24,500 lumens
- 2,000:1 contrast ratio
- Recommended screen sizes
18-23 m (59-75 ft)

DP2K-23BLP

- 2K resolution
- 24,500 lumens
- 2,400:1 contrast ratio
- Recommended screen sizes
18-23 m (59-75 ft)

DP4K-17BLP

- Native 4K resolution
- 17,000 lumens
- 2,000:1 contrast ratio
- Recommended screen sizes
13-18 m (43-59 ft)

CLP series

Award-winning laser phosphor cinema projectors

The compact CLP projectors are a perfect match for mid-size movie screens (13-19 m / 43-62 ft wide). You can choose from two 2K laser phosphor cinema projectors to upgrade your technology to laser illumination. The DP2K-20CLP was the first 20,000-lumen laser phosphor projector in the cinema industry.



”

Barco’s laser projectors offer an ideal combination of image quality and economic value, enabling us to simplify operations and eliminate maintenance costs associated with lamp-based projectors.”

Arthur Seago,
President of Santikos Entertainment

At a glance

DP2K-20CLP

- 2K resolution
- 20,000 lumens
- 2,400:1 contrast ratio
- Recommended screen sizes
16-19 m (52-62 ft)

DP2K-15CLP

- 2K resolution
- 15,000 lumens
- 2,400:1 contrast ratio
- Recommended screen sizes
13-16 m (43-52 ft)

SLP series

Laser phosphor quality at unprecedented price points

These small projectors are Barco's entry-level laser phosphor projectors. They're the most cost-effective 2K laser phosphor cinema projectors for smaller movie screens (6-13 m / 20-43 ft).

Driving operational and maintenance costs down, the SLP series offers pristine images and ultimate reliability at a low TCO. As such, they're the perfect choice for exhibitors looking for a worry-free solution to convert their smallest screens to laser with minimal hassle and risk.



At a glance

DP2K-10SLP

- 2K resolution
- 9,500 lumens
- 2,000:1 contrast ratio
- Recommended screen sizes
9-13 m (29-43 ft)

DP2K-8SLP

- 2K resolution
- 7,000 lumens
- 2,000:1 contrast ratio
- Recommended screen sizes
6-9 m (20-29 ft)

Much more than projectors



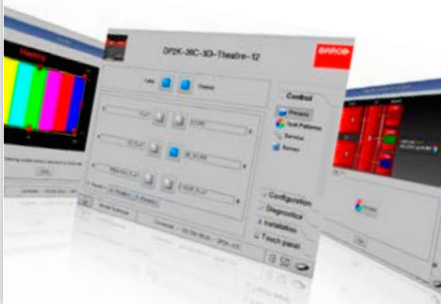
Retrofit ready

Do you already own a Barco B-series, C-series or S-series lamp-based cinema projector? Then we have some good news for you: you can now also benefit from laser technology thanks to our unique laser phosphor retrofit module. This module takes our renowned modular design one step further: with an **easy on-site upgrade**, you can replace your current lamp house with a compact laser phosphor module.



Cinema media processing

Powered by the unique Series 3 **Barco Alchemy** Integrated Cinema Media Processor (ICMP) with **HDMI 2.0a**, the laser phosphor cinema projectors offer advanced processing power combined with media server functionalities, integrated playback and content management. Barco Alchemy enables showings of 4K2D content at 60fps and 4K 3D at 30fps. Our laser phosphor projectors offer excellent compatibility with most common cinema and media server platforms.



Intuitive software tools for easy operation

Our wide range of software tools simplifies operations even further. The Barco **(Web) Commander** allows you to control your Alchemy server and manage and schedule shows via a PC, Mac, mobile device or touch panel controller. Barco's **Communicator** software is a service and install tool that enables you to configure your complete setup with ease. And with the cloud-based **CineCare Web** application, users can manage and monitor their cinema technology remotely.



Perfectly safe

The laser phosphor projectors and retrofit module feature an inherently safe design that fully interlocks the laser light sources. This unique design ensures that no **native laser light is emitted** during retrofitting or when you service your projector. So, you can always operate your projector perfectly safely. The laser phosphor projectors and retrofit modules classify as **Class 1, Risk Group 3 projectors**. This significantly loosens the older Class 4 regulation, and makes installation and operation much easier.



Financed through Barco Capital™

Our equipment financing solutions open up new ways to finance your upgrade investment. Thanks to Barco Capital, you **start saving costs from Day 1** compared to lamp-based solutions.



From the leaders in laser projection

Ever since the early beginnings of digital cinema, Barco has been breaking ground with numerous industry firsts that elevate the moviegoer experience and boost your revenue. With more than 65,000 projectors in the field, Barco is the market share leader in xenon digital cinema projection. Now, Barco is also leading the global conversion from lamp-based to laser-based projection.

The best choice for your screen

Barco offers the widest range of DCI-compliant laser-illuminated cinema projectors in the industry. From the ultra-bright 6P RGB DP4K-L projectors to our cost-effective laser phosphor projectors, our portfolio includes a perfect match for every screen. Thanks to our complementary portfolio of laser projectors, it's becoming easier for exhibitors to benefit from laser-illuminated projection, irrespective of their screen size, theater size, or budget. This makes it easy to convert to all-laser projection – to reap operational efficiencies and reduce costs for your entire theater or across your cinema network.

Choose the future, now

Laser projection is here – and it's here to stay. Barco's laser-illuminated projection technology is not only a game-changer for your moviegoer experiences and internal operations, it's also fully future-proof. In short, it's the best investment you can make. Choose Barco now – and reap the rewards of laser technology for many years to come. Why wait?

Barco

Beneluxpark 21, 8500 Kortrijk, Belgium
T +32 56 36 80 47 - F +32 56 36 83 86
email: sales.digitalcinema@barco.com

11101 Trade Center Drive,
Rancho Cordova, CA 95670, USA
T +1 916 859 2500 - F +1 916 859 2515

P.R. China
No. 16 Changsheng road,
Changping district, Beijing, 102200
T +86 10 8010 1166 - F +86 10 8010 5835